

# EP.N6400

## Active Network Control Panel

### Features

- Support 100,000 Users And 200,000 Events Memory
- Support Single Doors / 2 Doors / 4-In doors
- Support Car Park Mode
- Support Dynamic Reader Location
- Compatible with Various Reader Technologies
- ActiveTransmit & ActiveDownload
- Peer To Peer Global Anti-Passback
- Configurable Digital / Supervised Inputs (8)
- Dynamic Storage Allocation
- Unlimited Access Level
- Onboard & Cross-Board Interlocking
- User Counting (Card Holder / Car Park)
- Advance Encryption Standard (AES)
- Reader Output Control
- Dynamic Operation Profile
- Event Based Triggering (EBT)



High capacity



Active Transmit



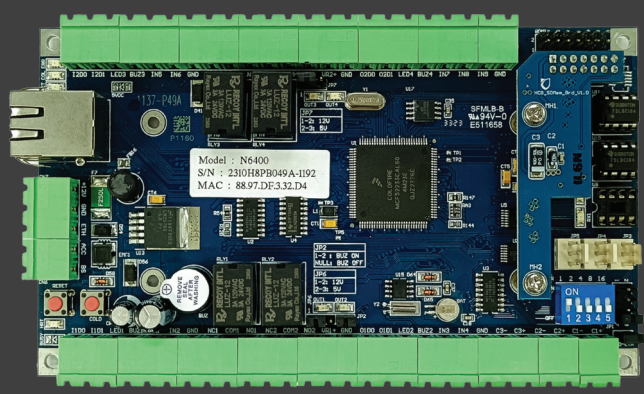
Door Interlocking

DSA

Dynamic Storage Allocation (DSA)

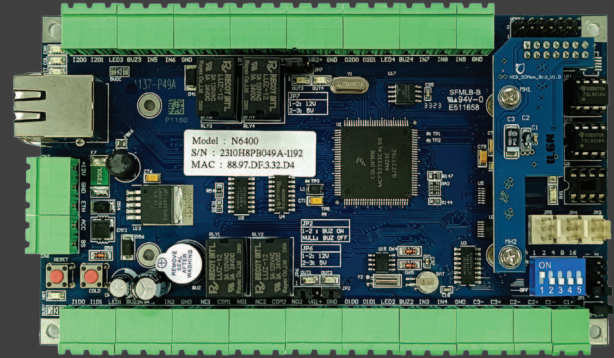


Built In Web Server



# EP.N6400

## Active Network Control Panel



## Technical Specification

Dimension	170mm (W) x 110mm (H) (board only)	
MCU	Freescale ColdFire 32bits@60MHz	
Memory	256K Flash Memory 32K SRAM (Buffer) 64Mbits Non-Volatile SPI Flash Memory (Storage) 2GB MicroSD Card (Secondary Storage)	
Number of Reader Support	<b>N6400</b> - 4-in Doors Mode -Single In Reader per door	
Card System	10 digit	
Operating Power	12vDC@3A	
Operating Temperature	0 °C to 40 °C	
Card Holder	100,000	
Event Transaction	200,000	
Access Level	Unlimited Access Level	
Digital/Supervise Inputs	Max 8, User configurable	(Door Sensor/Request-To-Exit/Fire Input/General Purpose)
Digital Output	Max. 4 Dry contact Relay	
Network Communication Port	10/100Mbps RJ-45 TCP/IP	
Power Protection	Resettable Fuse - 2.5A	
Surge Protection	TVS Up to 15KVA	
Onboard LED Control	Power / Communication / LAN / Event / Error	

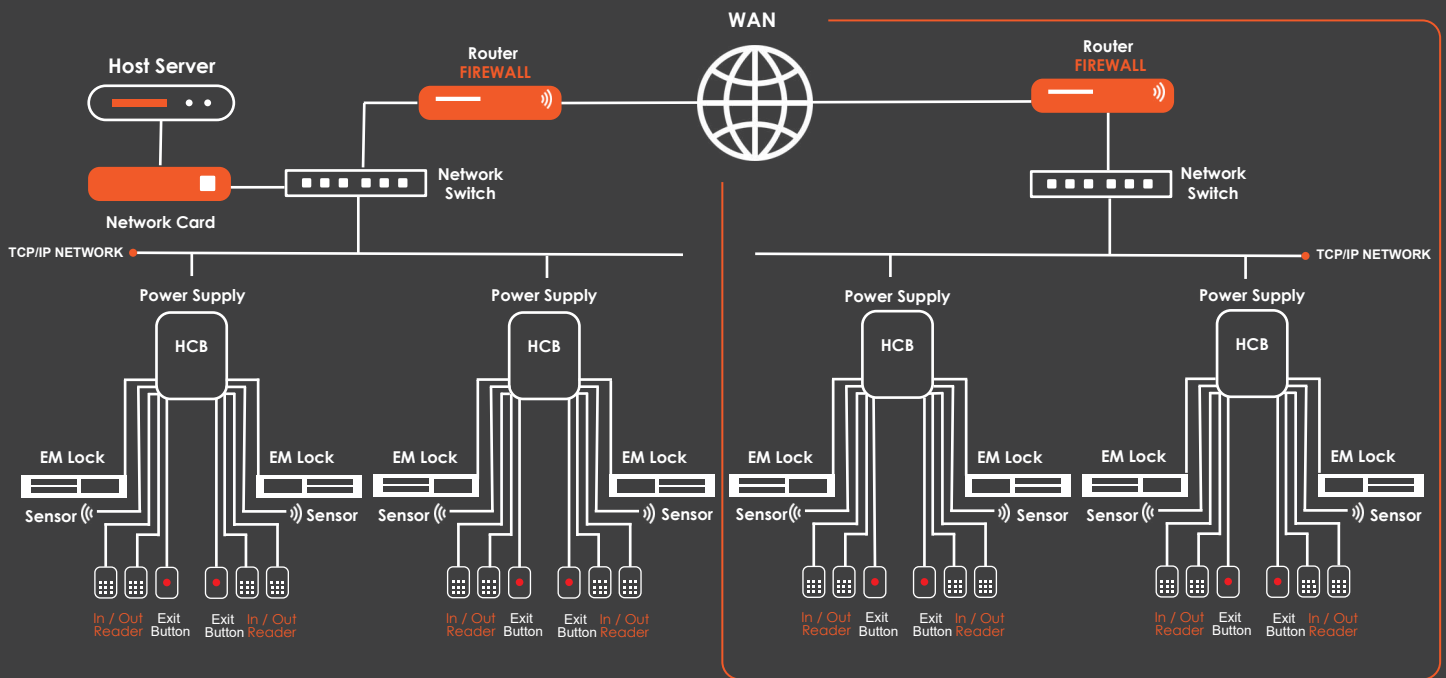
# EP.N6400

## Active Network Control Panel

### Technical Specification

AC Fail Monitoring	Yes
Battery Monitoring	Yes (Firmware threshold control to shutdown control panel)
External Short Circuit Protection	At readers
Onboard Battery	Apply to RTC only

### Basic Diagram System



### Ordering Information

EP.N6400

Entrypass Active Network Control Panel



[www.entrypass.net](http://www.entrypass.net)

#### Malaysia

No. 40, Jalan TPP 1/10, Taman Industri Puchong,  
Batu 12 Jalan Puchong, 47160 Puchong  
Selangor Darul Ehsan, Malaysia.  
Tel : +603 8068 1929  
Fax : +603 8062 6937  
Email : [info@entrypass.net](mailto:info@entrypass.net)

#### Singapore

No. 1, UBI View, #03-03, Focus ONE Building,  
Singapore 408555.  
Tel : +65- 6841 7242  
Fax : +65- 6841 3937  
Email : [info@entrypass.net](mailto:info@entrypass.net)

#### Indonesia

PT Brikom Entripas Indonesia  
Jl. Griya Utama, Komplek Puri Mutiara Blok BF No. 17,  
RT.1/RW.20, Sunter Agung, Tj. Priok, Kota Jkt Utara,  
Daerah Khusus Ibukota Jakarta 14350.  
Tel : +62 21 2937 6098  
Email : [info@entrypass.net](mailto:info@entrypass.net)